



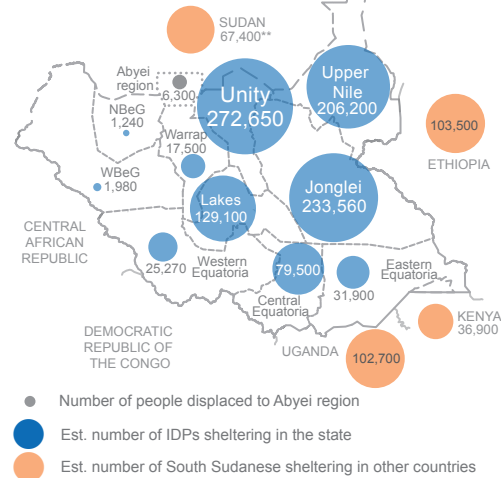
1,005,000*

est. people internally displaced

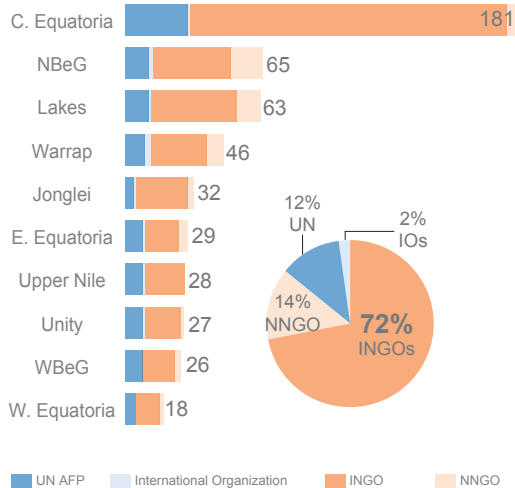


310,500**

est. people sheltering in neighbouring countries



Physical presence of humanitarian organizations



HUMANITARIAN NEEDS AND RESPONSE

The humanitarian situation continued to deteriorate. Over 1.3 million people have fled their homes, including 310,000 into neighbouring countries. Aid agencies have reached 1.3 million of 3.2 million people targeted for assistance by June. Of the 126 aid organizations in the country, 54 per cent have an operational presence in Jonglei, Upper Nile and Unity states, which are the worst-affected by the conflict.

